

## DISTILLATION GLASS BELL UNIT PLANT



---

---

### Experimental capabilities

---

---

- Study of a bubble cap distillation process
- Material balance
- Thermal balance
- Determination of the number of theoretical plates



## Services required

- Electrical supply : 230 VAC – 50 Hz – 20 A
- Electrical network : 1 phase + Neutral + Earth
- Water supply : 15 L/min – 3 bars
- Water drain : on the floor
- Dimensions: (L x W x H mm): 2000 x 700 x 2700
- weight (Kg): 200

Note : if the equipment installation is operated by our staff, all supplies and exhaust connections required must stand at less than 2m from the machine

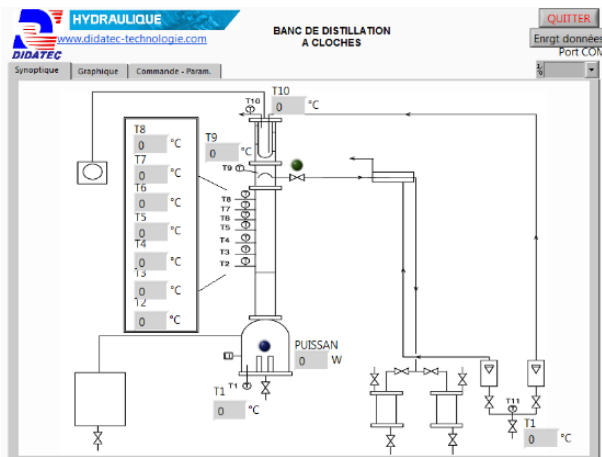
## Documentation

- User's manual
- Pedagogical manual
- Technical documentation of the components
- Lab exercises
- Software
- Certificate of conformity CE

## Monitoring: Parameter setting, Plot of curve, control

The bench is also equipped as standard with a monitoring and configuration software. The connection towards the PC is made via a standard USB port. The software is divided into three parts:

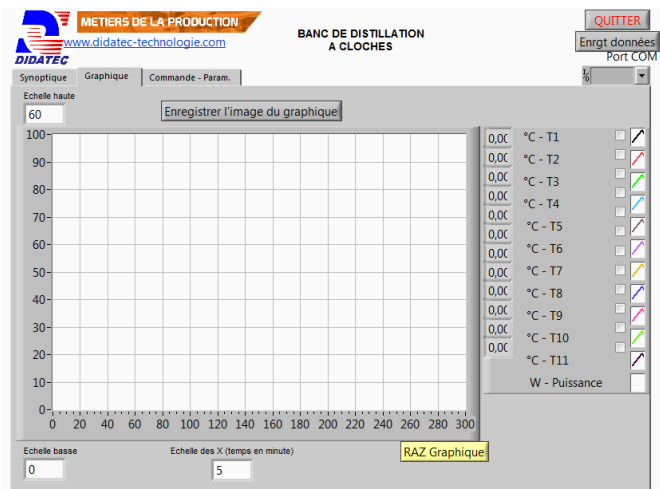
### SYNOPTIC:



We find in this window the block diagram of the machine with the location of various measures of process and their values.

### GRAPH:

We find in this graph window, the possibility of drawing the measurement curves as a function of the time by selecting the desired quantities.



# GPCD21



## CONTROL-PARAMETER:

We find in this tab, the option to order via the supervision the management of reflux head, the powering and the power setting of the heating resistors of the boiler.

